



## Wooden Collection







**The material applied in wooden products are 100% natural wood.**

**The colors used in the Products are made from natural oils having no harm to children and not contaminating the environments. This is the only color in the world with a VOC of 0% which through nanotechnology creates the layer on the surface of the wood and makes the pieces entirely waterproof.**

**All products of this company are 100% recycled to the nature. Through its products, send the Message of peace to the world.**

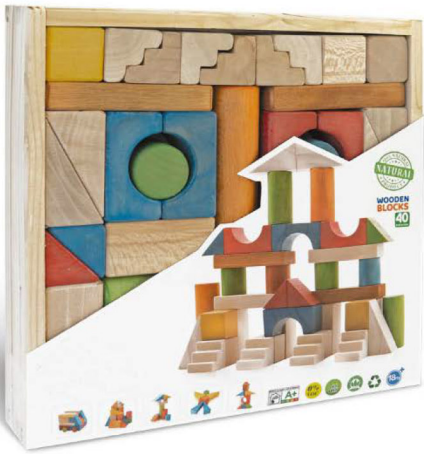
**The introduced games and models are among the most common and famous wooden game products in the world, but our main catalog can be what you have in mind.**

**Customization in the Brand, Dimensions, Packaging and most importantly design and production of New products.**





# Wooden Bricks



## Wooden Bricks



### In The Packaging

Size	40x 230x 230 mm
Num	40 Wooden Pcs
Wt	1020 Gr

### In The Carton

Size	24.5x 24.5x 25 cm
Num	6 Box
Wt	6020 Gr

- Enhance children's motor skill such as hand-eye coordination.
- Improve decision making and problem solving ability.
- Expand social relationship by cooperating with others.
- Develop language skills by talking about what they have built.
- Develop creativity skills by designing their own master piece.
- Stimulate children's imagination.



## Daberna



### In The Packaging

Size	18x 6x 10 mm
Num	90 wooden blocks + bags + 48 cards
Wt	450 Gr

### In The Carton

Size	21.5x 42.5x 18.5 cm
Num	14 Box
Wt	6300 Gr

- Enhance children's motor skill such as hand-eye coordination.
- Improve decision making and problem solving ability.
- Expand social relationship by cooperating with others.
- Develop language skills by talking about what they have built.
- Develop creativity skills by designing their own master piece.
- Stimulate children's imagination.



## Daberna





# Bricks & Dooz



## Bricks & Dooz



### In The Packaging

Size	60x 270x 320 mm
Num	40 Wooden Pcs
Wt	1163 Gr

### In The Carton

Size	32x 28x 34 cm
Num	6 Box
Wt	6978 Gr

- Enhance children's motor skill such as hand-eye coordination.
- Improve decision making and problem solving ability.
- Expand social relationship by cooperating with others.
- Develop language skills by talking about what they have built.
- Develop creativity skills by designing their own master piece.
- Stimulate children's imagination.



## Tower Balance

### In The Packaging

Size	80x 80x 285 mm
Num	8 pieces+6cards+bags+Dice
Wt	220 Gr

### In The Carton

Size	30x 50.5x 17.5 cm
Num	12 Box
Wt	2640 Gr

- Enhance children's motor skill such as hand-eye coordination.
- Improve decision making and problem solving ability.
- Improved confidence.
- Muscular nervous system harmonization and enhancing visual concentration.
- Play with squares, triangles, circles & ...
- Familiarize with different colors.







With Pattern

## Column Shapes

**In The Packaging**

Size	80x 160x 200 mm
Num	7pieces+ 8cards+ bags
Wt	246 Gr

**In The Carton**

Size	21x 33.5x 51.5 cm
Num	12 Box
Wt	2952 Gr

- Enhance children's motor skill such as hand-eye coordination.
- Improve decision making and problem solving ability.
- Improved confidence
- Muscular nervous system harmonization.
- Strengthen the sense of touch by closing your eyes.

7 PCS 2-6y

## Wooden Wall

**In The Packaging**

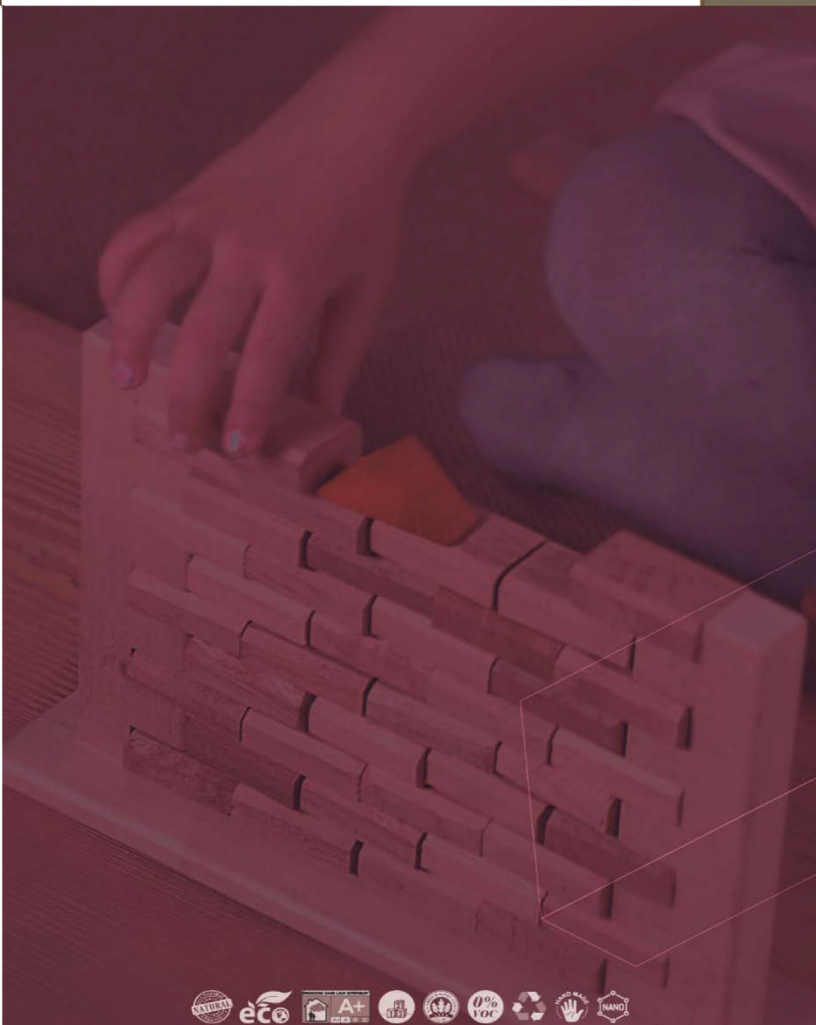
Size	175x 255x 650 mm
Num	43 Wooden Pcs + Bags
Wt	662 Gr

**In The Carton**

Size	18x 27.3x 52 cm
Num	8 Box
Wt	5296 Gr

- Enhance children's motor skill such as hand-eye coordination.
- Improve decision making and problem solving ability.
- Improved confidence
- Muscular nervous system harmonization.
- Increasing visual & dynamic concentration.

43 PCS 3y







## Color Jenga



### In The Packaging

Size	85x 85x 380 mm
Num	54 pieces+ 1dice+ bag
Wt	948 Gr

- Enhance children's motor skill such as hand-eye coordination.
- Expand social relationship by cooperating with others.
- Improve decision making and problem solving ability.
- Improved confidence
- Muscular nervous system harmonization.
- Familiarize with different colors.
- Increasing visual & dynamic concentration.

### In The Carton

Size	52x 34x 18.5 cm
Num	12 Box
Wt	11376 Gr



## Domino



### In The Packaging

Size	80x 160x 200 mm
Num	100 Wooden Pcs
Wt	542 Gr

- Enhance children's motor skill such as hand-eye coordination.
- Improve decision making and problem solving ability.
- Improved confidence
- Muscular nervous system harmonization.
- Increasing visual & dynamic concentration.

### In The Carton

Size	20 x 15 x 23 cm
Num	12 Box
Wt	6504 Gr



## Domino





## Wooden Page Toy



## Wooden Page Toy



### In The Packaging

Size	50x 160x 200 mm
Num	1 game board + 9 pieces
Wt	310 Gr

### In The Carton

Size	21 x 33.5x 51.5 cm
Num	12 Box
Wt	3720 Gr

- Enhance children's motor skill such as hand-eye coordination.
- Improve decision making and problem solving ability.
- Improved confidence
- Muscular nervous system harmonization and enhancing.



9 pcs 18m



## Alphabet & Numbers

### English



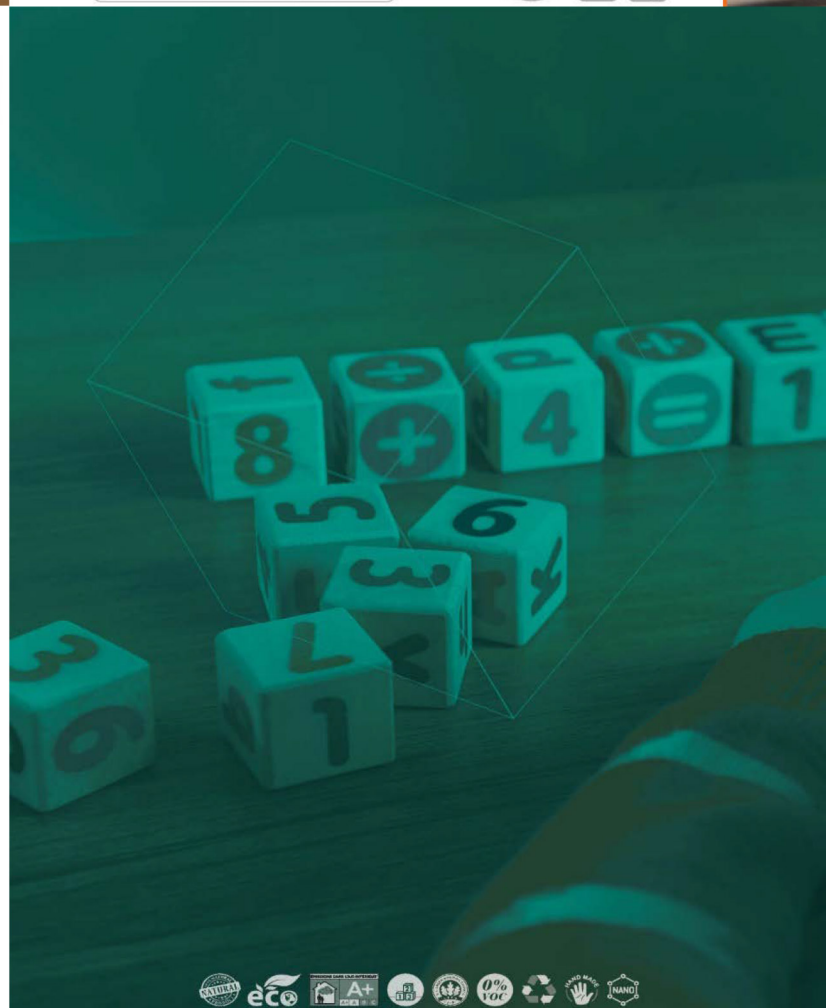
### In The Packaging

Size	3.6x 10.5x 13.3 mm
Num	12 Wooden Pcs
Wt	250 Gr

### In The Carton

Size	14x 22.5x 26.8 cm
Num	14 Box
Wt	3000 Gr

- Enhance children's motor skill such as hand-eye coordination.
- Improve decision making and problem solving ability.
- Improved confidence
- Muscular nervous system harmonization.
- Familiarity with relationships





# game Balance

# game Balance



## In The Packaging

Size	335 x 50 x 75 mm
Num	13 pcs & 8 cards
Wt	470 Gr

- Enhance children's motor skill such as hand-eye coordination.
- Improve decision making and problem solving ability.
- Muscular nervous system harmonization.
- Familiarity with volumetric mass and colors.
- Math games

## In The Carton

Size	85 x 85 x 380 cm
Num	10 Box
Wt	4700 Gr



12  
pcs

5+

5+

5+

5+

5+



# Ring Ring

## In The Packaging

Size	175 x 255 x 650 mm
Num	5 PCS
Wt	300 Gr

- Enhance children's motor skill such as hand-eye coordination.
- Improve accuracy and speed of operation.
- Improved confidence
- Muscular nervous system harmonization.
- Increasing visual & dynamic concentration.

## In The Carton

Size	18 x 27.3 x 52 cm
Num	8 PCS
Wt	2400 Gr



3y

100  
pcs

# Ring Ring



# Walnut Jenga



## Walnut Jenga

### In The Packaging

Size	85 x 85 x 380 mm
Num	54 pieces+ 1dice+ wooden pack
Wt	1310 Gr

### In The Carton

Size	52 x 34 x 18.5 cm
Num	6 Box
Wt	7860 Gr

- Enhance children's motor skill such as hand-eye coordination.
- Expand social relationship by cooperating with others.
- Improve decision making and problem solving ability.
- Improved confidence
- Muscular nervous system harmonization.



### In The Packaging

Size	310 x 275 x 70 mm
Num	10 PCS
Wt	732 Gr

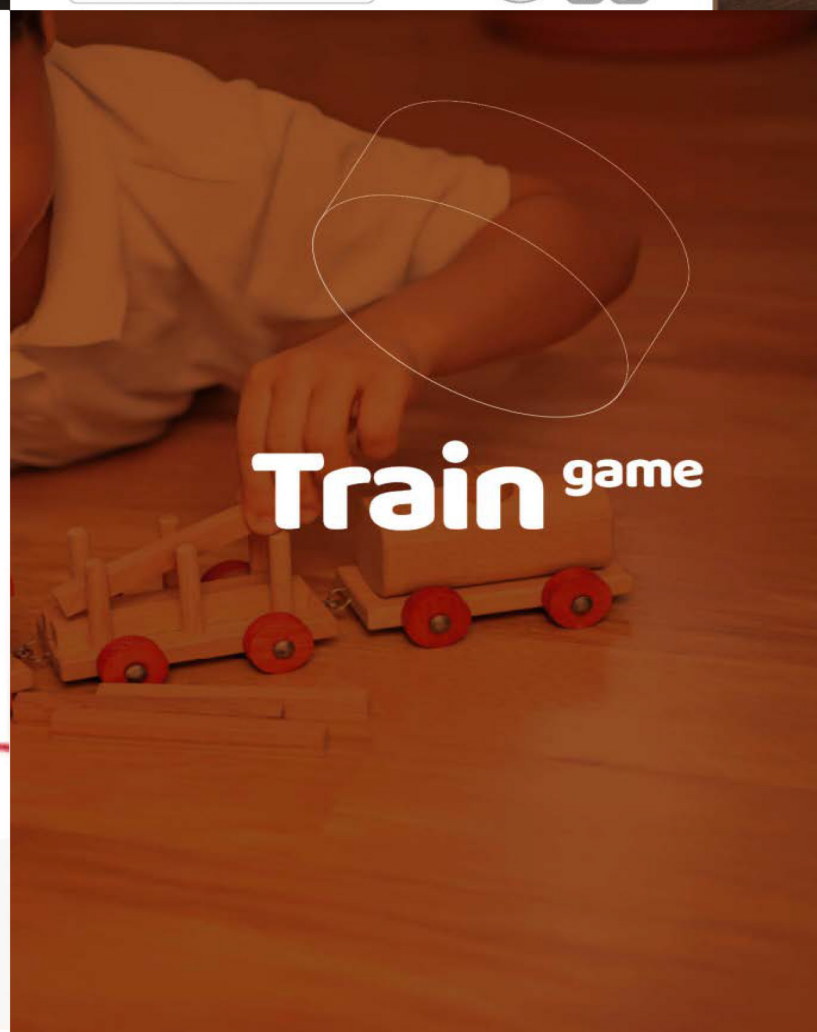
### In The Carton

Size	275 x 430 x 320 cm
Num	6 PCS
Wt	4392 Gr

- Enhance children's motor skill such as hand-eye coordination.
- Improved confidence.
- Muscular nervous system harmonization.
- Increasing visual & dynamic concentration.



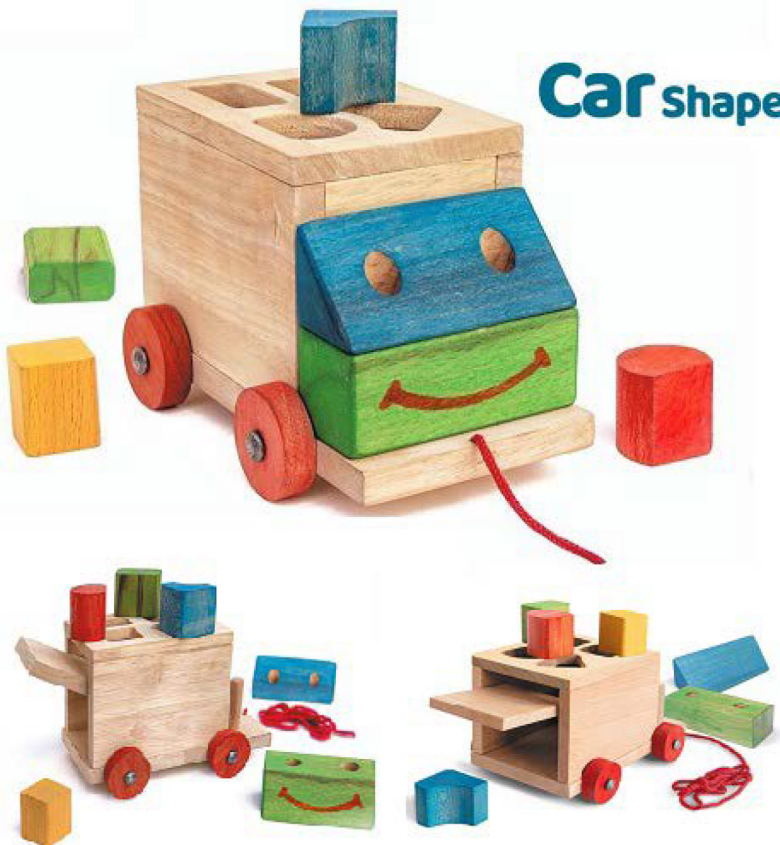
# Train game





# game Car Shapes

Car shapes



## In The Packaging

Size	22.3x 10.7x 10 mm
Num	7 pieces of wood
Wt	... Gr

## In The Carton

Size	32x 23x 35 cm
Num	9 Box
Wt	... Gr

- Enhance children's motor skill such as hand-eye coordination.
- Improved confidence.
- Muscular nervous system harmonization.
- Increasing visual & dynamic concentration.



wooden  
tractor

# game tractor



## In The Packaging

Size	22.3x 10.7x 10 mm
Num	2 pieces of wood
Wt	... Gr

## In The Carton

Size	32x 23x 35 cm
Num	9 Box
Wt	... Gr

- Enhance children's motor skill such as hand-eye coordination.
- Improved confidence.
- Muscular nervous system harmonization.
- Increasing visual & dynamic concentration.





# Adrenaline



## Adrenaline

### In The Packaging

Size	65x 270x 340 mm
Num	20 blocks Wooden+60 cards
Wt	1480 Gr

- Enhance children's motor skill such as hand-eye coordination.
- Improve decision making and problem solving ability.
- Expand social relationship by cooperating with others.
- Develop creativity by talking to others.
- Improved confidence
- Enhancing visual concentration.
- Memory Improvement.

### In The Carton

Size	27.5x 29x 35 cm
Num	4 Box
Wt	5920 Gr







# **Wooden Shape Puzzle**

Dimensions: 13 \* 13 \* 2 cm

Dimensions: 12 \* 12 \* 5 cm

Dimensions: 28 \* 15 \* 2 cm







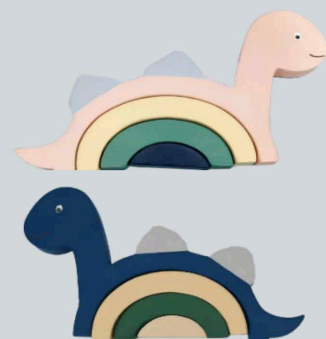
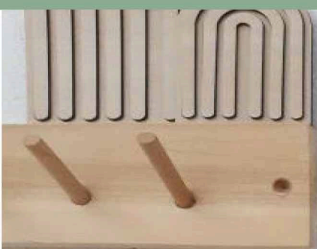
**Little Locomotive**

L: 45 cm



**Rainbow Woody**

Dimensions: 30\*15 cm



**Dinosaur**

L: 25 cm



**DrumBunny**

Dimensions: 17 \* 21 cm





### RingBelly Pup

L1: 20 cm

L2: 15 cm



### Spinny Bear

H: 24 cm

### Spinny Bunny

H: 26 cm

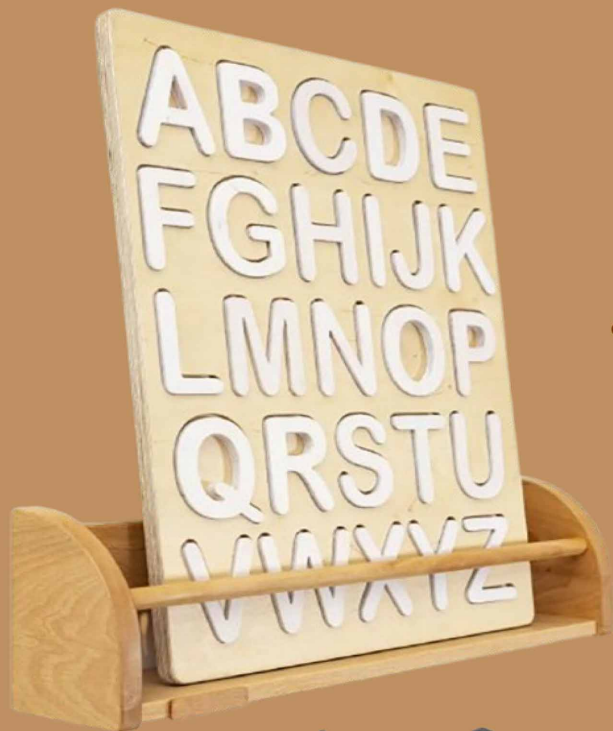


### Spinny Puppy

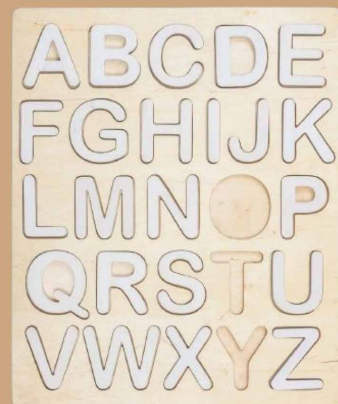
H: 22 cm







- Educational puzzle that is very fun and creative for both learning and crossword puzzles.



TOY

Material: Plywood (15mm)

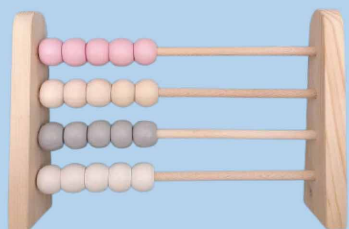
Dimensions: 50 \* 40 cm

Customizable in color & size



## BeadyRoll

H: 21 cm



## Little Counter

Dimensions: 21 \* 31 cm



## Wooden Bowling

H: 17 cm





## WoodyRide



- **Smooth Edge:** Designed with rounded edge, making it safe for little hands and feet
- **Sturdy Wooden Frame:** Carefully sanded and finished for durability and child safety
- **Child-Friendly Design:** Perfectly sized for toddlers, with a stable base to prevent tipping



- **Dimensions:** 82\*34\*62 cm
- **Weight:** 3.800 kg

- **Material:** Russian Plywood
- **Surface Finish:** Semi-Polyester
- **High-quality velvet mattress**
- **Horse & Elephant**



- **Dimensions:** 82\*34\*57 cm
- **Weight:** 5.500 kg





## Pickler's arch

Арка Пиклера

Pickler arch is designed and made in two sizes, small and large

Арка Пиклера спроектирована и изготовлена в двух размерах: маленьком и большом.

Age group:	8 months to 7 years
Maximum allowed weight:	50 kg
Pickler's arch dimensions:	67 cm * 100 cm * 50 cm
Slide dimensions:	120 cm * 44 cm

Возрастная группа:	от 8 месяцев до 7 лет.
Максимально разрешенный вес:	50 кг.
Размеры Арка Пиклера:	67 см * 100 см * 50 см.
Размеры горка:	120 см * 44 см.

Pickler's Arch is one of the most popular Montessori toys and is based on the Montessori teaching method. This means that you can give your children the freedom to be curious and explore their environment and help them develop independence and creativity. It provides a fun and engaging experience throughout its use. Now, you can have the peace of mind that comes with choosing the best learning approach for your child. Pickler's arch is made of very strong and stable plywood. All the parts of the collection are painted using high quality and environmentally friendly plant colors. It does not cause allergic reactions, does not contain harmful substances and is completely safe for children.

Арка Пиклера — одна из самых популярных игрушек Монтессори, основанная на методе обучения Монтессори. Это означает, что вы можете дать своим детям свободу проявлять любопытство и исследовать окружающую среду, а также помочь им развить независимость и творческий потенциал. Теперь вы можете быть спокойны, выбирая лучший подход к обучению для вашего ребенка. Арка Пиклера изготовлена из очень прочной и устойчивой фанеры. Все части коллекции окрашены высококачественными и экологически чистыми растительными красками. Он не вызывает аллергических реакций, не содержит вредных веществ и полностью безопасен для детей.



## Pickler's cube

Кубик Пиклера

Pickler's cube is based on the Montessori education method  
Куб Пиклера основан на методе обучения Монтессори

Age group:	8 months to 7 years
Maximum allowed weight:	50 kg
Pickler's arch dimensions:	58 cm * 58 cm * 58 cm
Slide dimensions:	120 cm * 44 cm

Возрастная группа:	от 8 месяцев до 7 лет.
Максимально разрешенный вес:	50 кг.
Размеры Арка Пиклера:	58 см * 58 см * 58 см.
Размеры горка:	120 см * 44 см.

Pickler's cube is based on the Montessori education method.

The combination of Pickler's triangle and Pickler's cube and arch is a very ideal path for children's motor development. This means that you can give your children freedom to move in the direction of curiosity and help them to explore their environment and foster independence and creativity.

The Pickler Cube offers everything a baby or toddler needs for their physical development, creating a fun and engaging experience throughout their use. Now, you can have the peace of mind that comes with choosing the best learning approach for your child. The Pickler Cube is made of very strong and stable plywood. All the parts of the collection are painted using high quality and environmentally friendly plant colors. It does not cause allergic reactions, does not contain harmful substances and is completely safe for children.

Сочетание треугольника Пиклера, куба и арки Пиклера — идеальный путь для развития моторики детей. Это означает, что вы можете дать своим детям свободу двигаться в направлении любопытства и помочь им исследовать окружающую среду, а также способствовать их независимости и творчеству.

Кубик Пиклера предлагает все, что нужно ребенку или малышу для его физического развития, создавая веселые и увлекательные впечатления на протяжении всего его использования. Теперь вы можете быть спокойны, выбирая лучший подход к обучению для вашего ребенка.

Куб Пиклера изготовлен из очень прочной и устойчивой фанеры. Все части коллекции окрашены высококачественными и экологически чистыми растительными красками. Он не вызывает аллергических реакций, не содержит вредных веществ и полностью безопасен для детей.







## Pickler's triangle Треугольник Пиклера

Age group:	8 months to 7 years
Maximum allowed weight:	50 kg
Pickler's arch dimensions:	78 cm * 95 cm * 80 cm
Slide dimensions:	120 cm * 44 cm

Возрастная группа:	от 8 месяцев до 7 лет.
Максимально разрешенный вес:	50 кг.
Размеры Арки Пиклера:	78 см * 95 см * 80 см.
Размеры горки:	120 см * 44 см.

The triangular wooden ladder, known as Pickler's triangle, is a child's play-sports device that is very useful for developing motor skills, balance and strengthening the child's muscles.

This triangle was designed by pediatrician Amy Pickler. He believed that children should discover Pickler's triangle on their own terms and at their own time; If they want to climb it, they should be able to do so freely.

Pickler's wooden triangle is a wooden ladder with the best quality material of beech wood, plantain and plywood, which can be folded and opened.

Non-toxic coating, quality connections, manufacturing accuracy and excellent material make this game completely safe and practical for children.

For better efficiency, more skill enhancement and higher attraction, a double-sided slide and rock climbing plate has been added to this ladder and provides the possibility of more varied play for the child.

wooden sports equipment with the best quality of construction guarantees the safety of children and with its attractiveness makes them active and physically and mentally healthy.

Треугольник Пиклера Треугольная деревянная лестница, известная как треугольник Пиклера, - это детское игровое-спортивное приспособление, которое очень полезно для развития моторики, равновесия и укрепления мышц ребенка. Этот треугольник был разработан педиатром Эми Пиклер. Он считал, что дети должны открывать треугольник Пиклера самостоятельно и в удобное время; Если они захотят подняться на него, они должны иметь возможность сделать это свободно. Деревянный треугольник Пиклера - это деревянная лестница, изготовленная из высококачественного материала бука, подорожника и фанеры, которую можно складывать и открывать. Нетоксичное покрытие, качественные соединения, точность изготовления и отличный материал делают эту игру полностью безопасной и практичной для детей. Для большей эффективности, совершенствования навыков и большей привлекательности к этой лестнице добавлена двусторонняя горка и пластина для скалолазания, что обеспечивает возможность более разнообразных игр для ребенка. Деревянное спортивное оборудование самого высокого качества конструкции гарантирует безопасность детей и благодаря своей привлекательности делает их активными, физически и психически здоровыми.



## Triple Wooden Set Тройной деревянный набор

Age group:	1 year to 8 years
Maximum allowed weight:	50 kg
Pickler's arch dimensions:	120 cm * 150 cm * 140 cm

Возрастная группа:	от 1 года до 8 лет
Максимально разрешенный вес:	50 кг
Размеры Арки Пиклера:	120 см * 150 см * 140 см

8 games in one device can create a happy and varied game for our children.

- 1- Slide
- 2- Swing
- 3- Barfix
- 4- Horizontal ladder
- 5- Rock climbing
- 6- Swedish ladder
- 7- Playhouse
- 8- With a ring

Аппараты со смешанными играми очень привлекательны для детей.

8 игр в одном устройстве сделают игру веселой и разнообразной для наших детей.

- 1- Горка
- 2- Качели
- 3- Барфикс
- 4- Горизонтальная лестница
- 5- Скалолазание
- 6- Шведская лестница
- 7- Игровой домик
- 8- С кольцом







## Double Wooden Set

Двойной деревянный набор

Age group: 1 year to 8 years  
Maximum allowed weight: 50 kg  
Pickler's arch dimensions: 120 cm \* 120 cm \* 100 cm

Возрастная группа: от 1 года до 8 лет  
Максимально разрешенный вес: 50 кг  
Размеры Арки Пиклера: 120 см \* 120 см \* 100 см

The devices with mixed games are very attractive for children.  
5 games in one device can create a happy and diverse game environment for our children.

- 1- Slide
- 2- Swing
- 3- Barfix
- 4- Ladder
- 5- Playhouse

Аппараты со смешанными играми очень привлекательны для детей.  
5 игр в одном устройстве могут создать веселую и разнообразную игровую среду для наших детей.

- 1- Слайд
- 2- Качели
- 3- Барфикс
- 4- Лестница
- 5- Игровой домик



## Children's desk

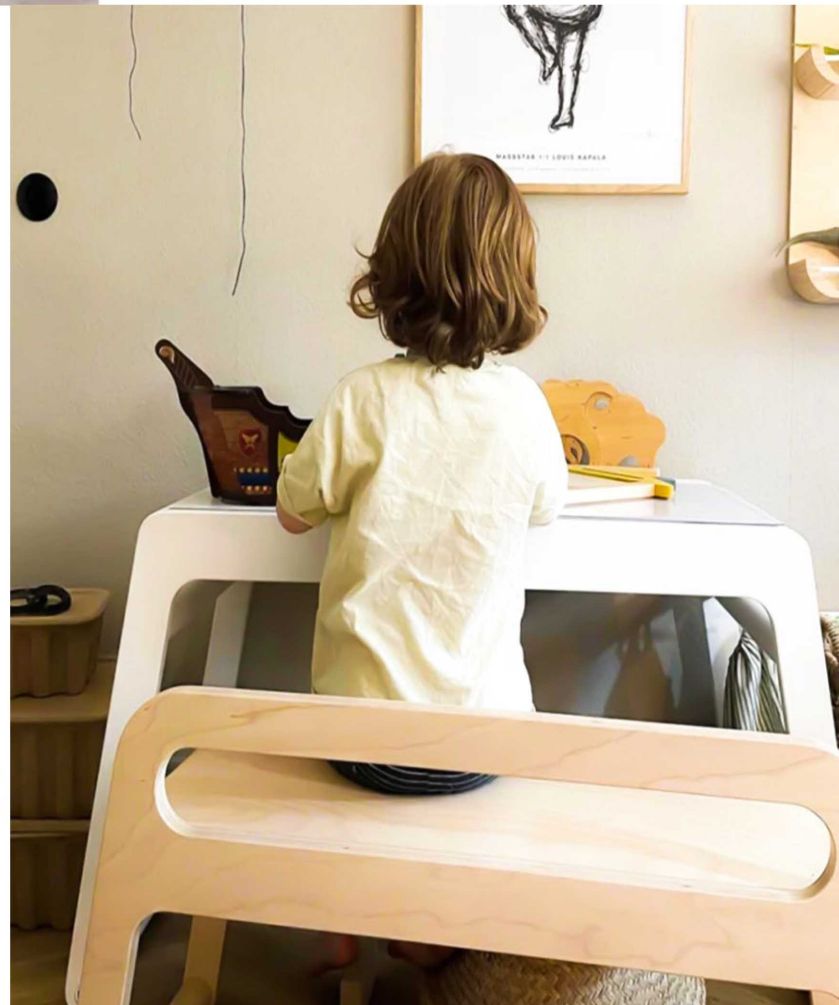
Детский стол

Age group: 2 years to 8 years  
Maximum allowed weight: 50 kg  
Pickler's arch dimensions: 50 cm \* 110 cm \* 60 cm  
Slide dimensions: 30 cm \* 90 cm \* 52 cm

Возрастная группа: от 2 лет до 8 лет  
Максимально разрешенный вес: 50 кг.  
Размеры Арки Пиклера: 50 см \* 110 см \* 60 см  
Размеры горка: 30 см \* 90 см \* 52 см

desk One of the interests of children is creativity in drawing, for this reason, Hiwa children's desk creates a suitable and comfortable platform for children. The feature of the hidden bench gives a beautiful appearance to the house and the child's room

Одним из интересов детей является творчество в рисовании, поэтому детский стол Hiwa создает удобную и удобную площадку для детей. Особенность скрытой скамейки придает красивый вид дому и детской комнате







## Crowned wooden ladder

Коронованная деревянная лестница

Age group:	3+ years
Maximum allowed weight:	70 kg
Pickler's arch dimensions:	70 cm * 80 cm * 235 cm
Slide dimensions:	120 cm * 44 cm

Возрастная группа:	3 года и старше
Максимально разрешенный вес:	70 кг
Размеры Арки (Пиклера):	70 см * 80 см * 235 см
Размеры горки:	120 см * 44 см

Crowned wooden ladder Versatile ladder at home, playhouse and children's sports clubs The wooden children's ladder with Swedish model and crown is one of the best children's sports equipment at home and in the playhouse or even in the children's sports club, which is widely used in gymnastics, bodybuilding and crossfit, parkour, etc. A versatile term for the Swedish ladder in that it is used for most exercises in a variety of disciplines. All physical exercises are done using this ladder, for example, by climbing its stairs, you can do swimming or use it for barfix movements. At the top of the children's Swedish ladder, a crown is designed, which is suitable for performing barfix and more professional muscle-up exercises. The wood used in the children's Swedish ladder is beech or sycamore.

Коронованная деревянная лестница

Универсальная лестница для дома, игрового домика и детских спортивных клубов.

Деревянная детская лестница со шведской моделью и короной – один из лучших детских спортивных снарядов дома и в игровом домике или даже в детском спортивном клубе, который широко используется в гимнастике, бодибилдинге и кроссфите, паркуре и т. д.

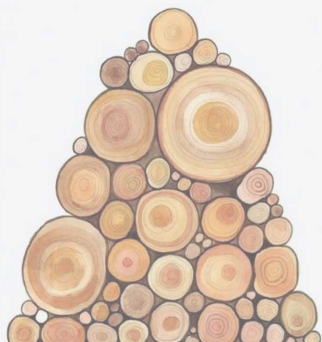
Универсальный термин для обозначения шведской лестницы, поскольку он используется для большинства упражнений в различных дисциплинах.

С помощью этой лестницы выполняются все физические упражнения, например, поднимаясь по ней, можно заниматься плаванием или использовать ее для штанговых движений.

На вершине детской шведской лесенки предусмотрена коронка, которая подходит для выполнения барфикса и более профессиональных упражнений на выход силой.

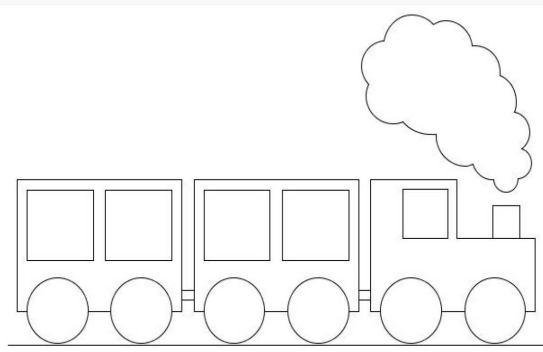
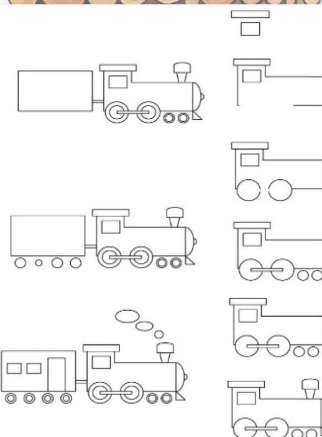
Древесина, используемая в детской шведской лестнице, — бук или платан, одна из лучших пород древесины, доступных на рынке

Wood is nature's art, generously given. Our art is transforming it into beautiful and functional forms.



Imagine it, and we will make it a reality.

You imagine. We build. We are with your **Dreams...**





## Wooden Baby Cradle

Integrated Slot  
for Musical Mobile



Connectable to  
Mother's Bed



Motion Lock



Velvet  
Bedding Set



Chiffon Netting



Wooden  
Cradle Toys



- Mattress: 5 cm Foam Layer
- Gentle Sliding door system
- Anti-reflux
- Surface Finish: Semi-Polyester



- Dimensions: 100 \* 60 cm
- Max Load: 20 kg
- Material: Russian Plywood (Multi-Layer)



- Wooden cradle toys
- Easy-reach height adjustment
- Wheels: 2 locking casters + 2 swivel wheels
- Model: Melano



- Motion Lock
- Wooden Cradle Toys
- Easy-reach height adjustment & Anti-reflux
- Material: Russian Plywood (Multi-Layer)

## Wooden Baby Cradle



- Max Load: 30 kg
- Wheels: 2 locking casters + 2 swivel wheels
- Velvet Bedding Set

- Dimensions: 120 \* 80 cm
- Gentle Sliding door system
- Model: Calima

## Wooden Baby Cradle



**Wheels: 2locking  
Casters+2 Swivel wheels**

**All-Around cradle bumper**

**Dimensions: 98 \* 58 cm**

**Max Load: 15 kg**

**Wooden cradle toys**

**Mattress: 5cm Foam layer**

**Velvet Bedding Set**

**Model: Ovely**

**Material: Russian  
Plywood (Multi-Layer)**

**Surface Finish: Semi-  
Polyester**







# **Certificates**



Toy standard EN 71-3 .

This European guideline regulates the migration of certain hazardous elements like barium, cadmium and mercury etc .

Certified leader or leadership in energy and environmental design .  
The world's most comprehensive green building ranking system .  
leed is valid in over 165 countries .

An independent laboratory (Ecca) has subjected our products to gaschromatography tests to help determine the VOC level in a product .

French legislation which measures the number of VOCs in products and which awards a grade from A+ (lowest emission) to C (highest emission).



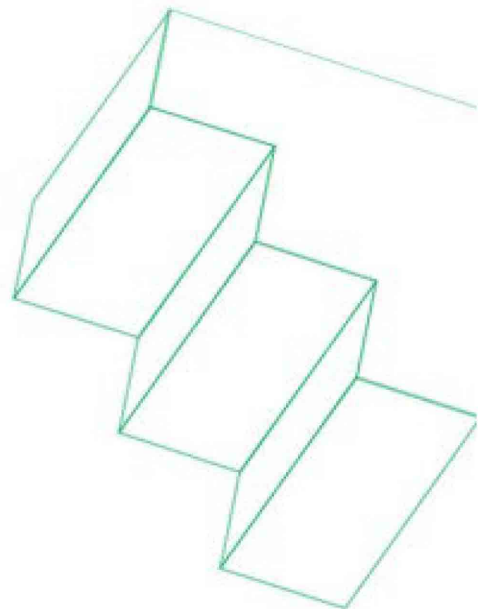






The Indoor Air Comfort Gold label, combined with the additional CDPH Section 01350 and M1 odour and ammonia testing, shows global compliance with:

- AgBB /ABG
- French A+
- M1
- Belgian VOC Regulation
- CDPH Section 01350
- EMICODE EC1 PLUS
- LEED v4 Worldwide
- BREEAM Worldwide
- Byggvarubedomningen (BvB) section 6. Emissions to indoor environment
- WELL (for the VOC part)
- Greenguard compliance based on CDPH Section 01350 test results
- ANSES
- Floorscore 'friendly' certification for flooring products (positive contribution)



Backed by a global organization of more than 30,000 staff, in 400 laboratories across 42 countries with some 30 years of collective experience, we are always informed about new regulations and requirements regarding emissions in order to keep our products compliant with what's needed.

#### A guarantee that exceeds the product

Eurofins Indoor Air Comfort Gold certification includes more than testing and screening for thousands of chemicals. It includes an internal quality program for processes to ensure that low-emitting products are continuously manufactured. This includes on-site audits, re-testing and certification – together ensuring an extremely high level of reliability in the statement of very low VOC emissions.



*Rubio*  
**MONOCOAT**



### Other International certificates

Our focus on sustainable entrepreneurship is reflected in the certificates our products have been awarded by numerous independent, international institutes. In addition to the certificates mentioned above, here are some others we have been awarded:

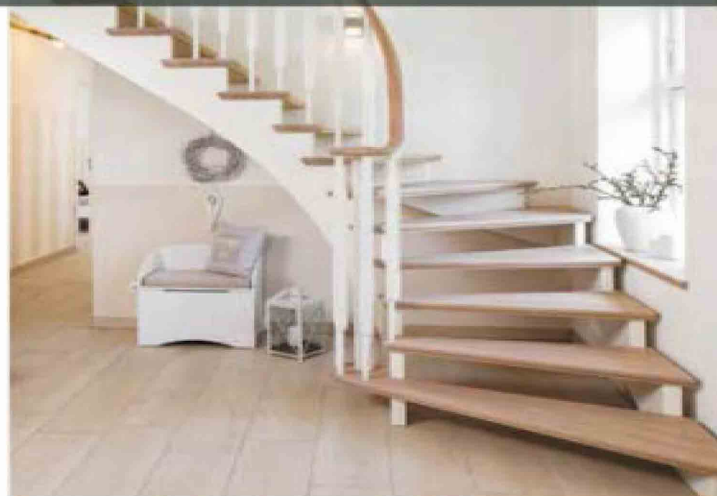
#### FR-certificate Bfl-S1

The RMC FR Oil System, our flame-retardant oil system, has been tested in accordance with the following standards: EN 13501-1, EN ISO 11925-2 and EN ISO 9239-1. Achieving a Bfl s1 rating is a first. The B-certificate is the highest classification ever achieved by an oil system.

The s1 refers to the extent that smoke development is limited. This is something we consistently strived to achieve during the development phase.

#### Toy standard EN 71-3

This European guideline regulates the migration of certain hazardous heavy metals like barium, cadmium and mercury etc. in different types of toys. The decision reflects that wood treated with RMC Oil Plus 2C or RMC Hybrid Wood Protector is safe for children. It also means that chopping boards, kitchen worktops, tabletops, etc. that have been treated with RMC Oil Plus 2C are also safe for domestic use.



Rubio  
MONOCOAT

eurofins

### Indoor Air Quality

Worldwide, people are paying more and more attention to all factors that impact health. Indoor air quality is one of these, and it can be influenced by products that release harmful pollutants.

This can lead to all kinds of health problems, from headaches to irritation of the eyes and throat and even asthma or cancer. Eco-friendly products have therefore become a must for a growing group of consumers.

The result has been a boom of products that proclaim to be green. Consumers are gaining awareness of this trend and search for products in which they can confide.

#### Rubio Monocoat Oil, the first oil containing 0% volatile organic components

Rubio Monocoat Oil has been a pioneer when it comes to environmentally friendly products. Three years before the introduction of the first VOC (volatile organic compound) regulations, we decided to set a high bar and go for 0% VOC. The standards that we set for ourselves were stricter than those that have been prescribed in legislation dating back to 2010. This offers proof of our care for the health of both the installer of the oiled floor as well as the end-user who will live in the room.

From 2018 on, we are taking this engagement to the next level by adding the Eurofins Indoor Air Comfort Gold label to our certificates. This label guarantees you, our customer, that our products will continue to meet the high standard you expect of them regarding emissions for years to come.

#### Eurofins Indoor Air Comfort Gold

Rubio Monocoat is the first in the wood treatment sector to get the Eurofins Indoor Air Comfort Gold label. Other well-known brands in the building industry that attained this label include BASF, Knauf Insulation, Saint Gobain Isover and many others.

With this label, we want to continue to give our customers the guarantee that our products are a safe choice when it comes to emissions, now and in the future.

Eurofins Indoor Air Comfort Gold is a sign of Rubio Monocoat's focus on quality and contribution to a healthy indoor environment. The label combines the most relevant emission specifications and requirements in Europe in one certification.







**We supply like nobody else...**

**WhatsApp: +98 99620022 98**

**Support: [Sales@hchtoys.com](mailto:Sales@hchtoys.com)**

**[www.HCHTOYS.com](http://www.HCHTOYS.com)**